






GAS ENGINE CENTRIFUGAL PUMPS






**LIST PRICE
CALL FOR DISCOUNTS!**

Gas Engine Driven Centrifugal Pumps

	Model Number	Max. GPM	Max. PSI	Description	List Price	Estimated Weight Ea.
	1536	104	70	1½" x 1¼" centrifugal pump close coupled to a Briggs and Stratton 5 hp gas engine with mounting base.	\$ 952.00	53 lbs.
	1537	110	80	1½" x 1¼" centrifugal pump close coupled to a Honda 5.5 hp gas engine with mounting base.	1579.00	53 lbs.
	1538			1½" x 1¼" centrifugal pump kit. Parts come unassembled. Does not include engine.	435.00	14 lbs.
	1539	104	70	The same pump and engine as Model 1536 without the base.	930.00	53 lbs.
	1540	110	80	The same pump and engine as Model 1537 without the base. Includes a cyclonic air cleaner.	1558.00	53 lbs.
	1550	150	140	2" x 1½" centrifugal pump, close-coupled to a 9 hp, Honda gas engine.	2298.00	105 lbs.
	1551			2" x 1½" centrifugal pump kit. Parts come unassembled. Does not include engine.	827.00	44 lbs.
	3430-0332			Seal and o-ring repair kit.	42.25	3 oz.
	3430-0464			Seal, o-ring, and gasket repair kit for 1550 and 1551 only.	185.75	4 oz.

Gas Engine Driven Self-Priming Centrifugal Pumps

	Model Number	Max. GPM	Max. PSI	Description	List Price	Estimated Weight Ea.
	1536-SP	100	65	2" x 2" centrifugal pump close coupled to a Briggs and Stratton 5 hp gas engine with mounting base.	1262.00	72 lbs.
	1537-SP	106	75	2" x 2" centrifugal pump close coupled to a Honda 5.5 hp gas engine with mounting base.	1889.00	72 lbs.
	1538-SP			2" x 2" centrifugal pump kit. Parts come unassembled. Does not include engine.	745.00	33 lbs.
	1539-SP	100	65	The same pump and engine as Model 1536 without the base.	1240.00	72 lbs.
	1540-SP	106	75	The same pump and engine as Model 1537 without the base. Includes a cyclonic air cleaner.	1558.00	72 lbs.
	1550-SP	155	135	2" x 2" centrifugal pump, close-coupled to a 9 hp, Honda gas engine.	2653.00	125 lbs.
	1551-SP			2" x 2" centrifugal pump kit. Parts come unassembled. Does not include engine.	1182.00	66 lbs.

Accessories

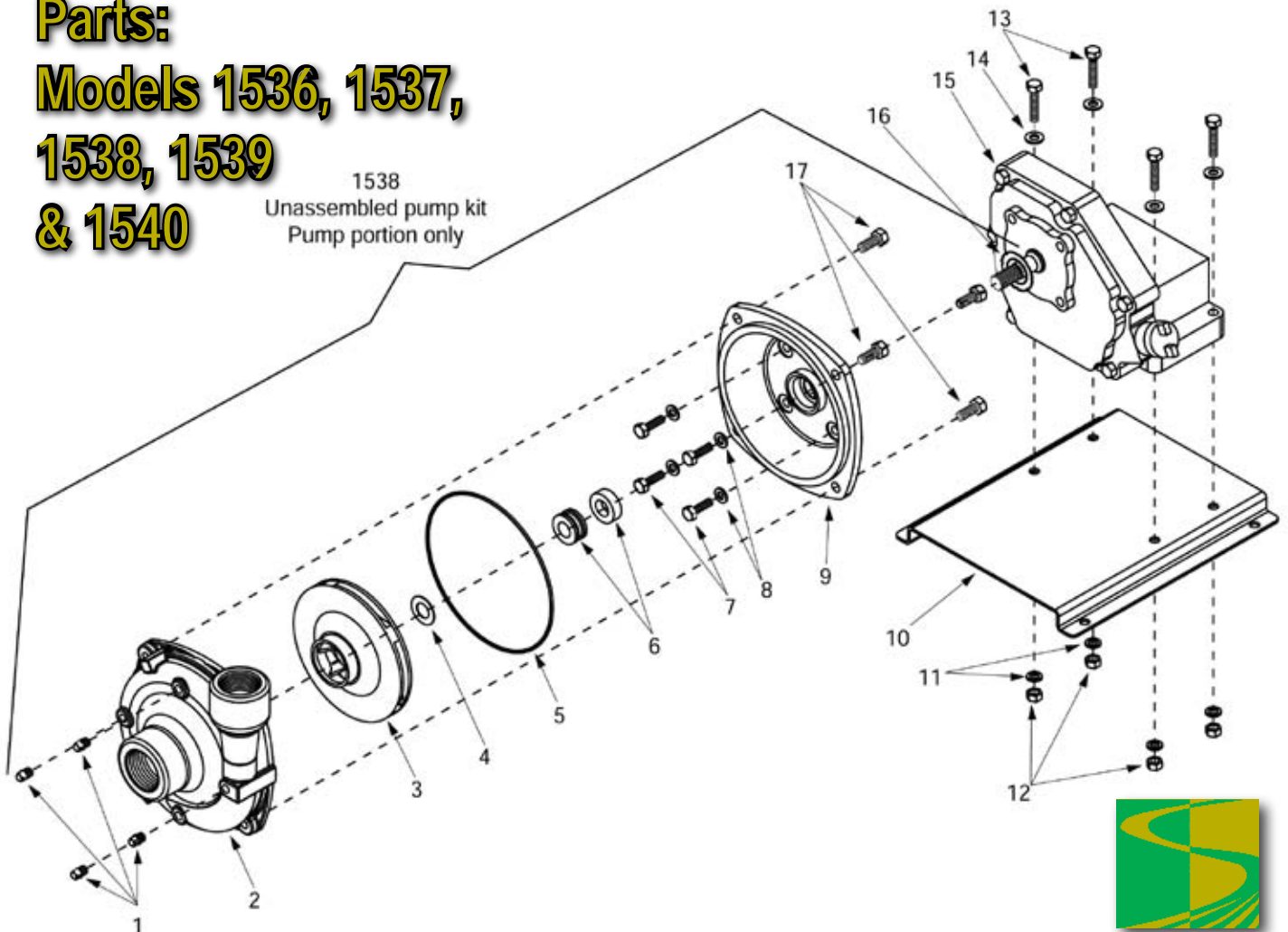
3430-0482-SP		Self primer Kit 1536, 1537.	645.25	1 lb.
3430-0487-SP		Self primer Kit 1550, 1551.	844.75	1 lb.



GAS ENGINE CENTRIFUGAL PUMPS

Parts:
Models 1536, 1537,
1538, 1539
& 1540

1538
 Unassembled pump kit
 Pump portion only



Seal Kit for 1536 thru 1540 (Std.)
 No. 3430-0332 consists of:
 (1) Ref. 4 Gasket \$ 42.25
 (1) Ref. 5 O-Ring
 (1) Ref. 6 Mechanical seal

Seal Kit for 1536 thru 1540 (Opt.)
 No. 3430-0589 (Silicon carbide)
 consists of: \$ 154.75
 (1) Ref. 5 O-Ring
 (1) Ref. 6 Mechanical seal

Note: When ordering parts, give quantity, part number, description and complete model number. Reference numbers are used ONLY to identify parts in the drawing and NOT to be used as order numbers.

Ref. No.	Qty. Req'd.	Part No.	Description	
1	4	2406-0007	Drain Plug	\$.80
2	1	0152-9000C	Pump Casing	162.00
3	1	0402-9200P	Impeller (Nylon)	96.50
4	1	1700-0100	Gasket	3.55
5	1	1720-0083	O-ring	2.45
6	1	2120-0009	Mechanical Seal - Viton	37.50
7	4	2210-0098	Bolt	1.65
8	4	1700-0119	Seal	5.10
9	1	0703-9200C	Flange	142.00
10	1	1510-0083	Mounting Plate	71.25
11	4	2260-0002	Lock Washer	.75
12	4	2250-0003	Nut	.80

Ref. No.	Qty. Req'd.	Part No.	Description	
13	4	2210-0021	Bolt	\$.75
14	4	2270-0040	Washer	.75
15	1	2541-0033 (135232-0035-01)*	Briggs & Stratton Engine (Model 1536 and 1539)	
15	1	2541-0034 GX160K1 Type-TX2*	Honda Engine (Model 1537)	
15	1	2541-0035 GX160KIT1C3	Honda Engine (Model 1540)	
16	1	1410-0088	Bearing Shield (5 HP Briggs)	
16	1	1410-0105	Bearing Shield (5.5 HP Briggs)	
17	4	2210-0020	Bolt	