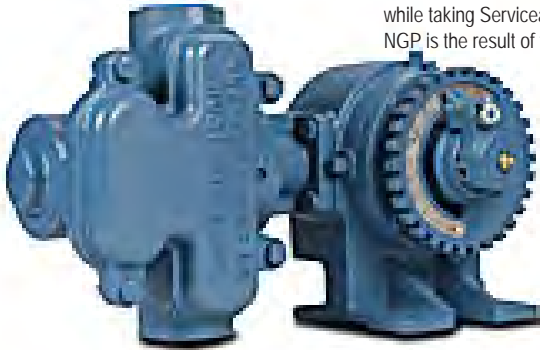




NGP - Completely Redesigned...

The Best Just Got Better



CDS-John Blue Company makes the Best even Better with NGP, maintaining historical Accuracy, Performance, Dependability, while taking Serviceability to a new level. The CDS-John Blue NGP is designed to meet all of your precision application needs. The NGP is the result of tremendous efforts to meet the ever-changing needs of the agricultural marketplace. All CDS-John Blue NGP and existing piston pumps have been engineered and extensively field-tested to achieve the Best liquid applicator pump available today.

The NGP offers excellent enhancements, plus all the features and benefits of the proven "L" & "LM" pumps growers have successfully used for many years. CDS-John Blue's reputation for superior quality has been proven through time by meeting the demands of generations of agricultural professionals. The NGP gives the grower the most modern engineering design and technology available in pumps today. The best of the old is combined with the new and the footprint is the same as the "LM" pumps for ease of interchangeability. There's more, you can expand the basic NGP to variable rate applications in the future, when you are ready.

| Part# | Piston | Stroke | Max Flow GPM | Max PSI | Max Speed RPM | Inlet & Outlet FPT | Price |
|----------|-------------------------------|----------|-----------------|------------|------------------|-----------------------|------------|
| NGP-6055 | Single Piston - Double Acting | Variable | 21.0 | 120 | 450 | 1 1/2" FPT | \$2,558.92 |
| NGP-7055 | Single Piston - Double Acting | Variable | 34.2 | 120 | 450 | 1 1/2" FPT | \$3,057.43 |
| NGP-8055 | Double Piston - Double Acting | Variable | 42.0 | 120 | 450 | 1 1/2" FPT | \$3,976.03 |
| NGP-9055 | Double Piston - Double Acting | Variable | 68.4 | 120 | 450 | 1 1/2" FPT | \$4,436.42 |



LM Series

High Speed - High Pressure - Rugged Construction

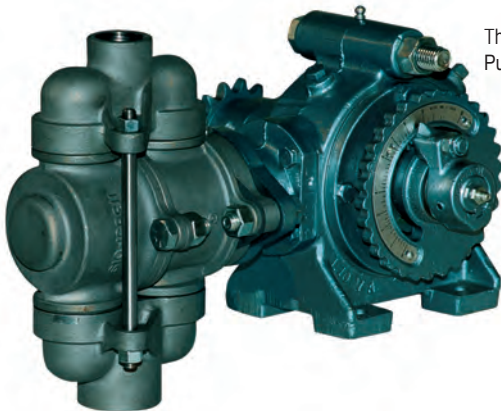
Liquid Metering Piston Pumps - LM Series

Big Features for Precision Application

There's a CDS-John Blue Piston Pump to meet virtually all your precision application needs. All CDS-John Blue Piston Pumps have been engineered and extensively field tested to achieve the perfect liquid applicator pump. We have built our reputation on providing superior performance, service and quality and we are committed to continuing this in the future.

Features:

- Liquid Metering Piston Pump Pumping head comes standard in cast iron to handle most fertilizers and chemicals.
- Maximum operating discharge pressure 120 PSI.
- Double piston rod seals for proper sealing and smooth operation.
- Precision made 316 Stainless Steel check valves and piston rod to resist corrosion.
- Various clutch models are available.
- Variable stroke length for a wide range of application rates without changing sprockets.
- Simple to adjust rates with pointer dial.



| Part# | Piston | Max Flow GPM | Max PSI | Max Speed RPM | Price |
|---------|------------------|-----------------|------------|------------------|------------|
| LM-1255 | Without Clutch | 12.5 | 120 | 550 | \$2,655.51 |
| LM-2450 | Manual Throwout | 25.7 | 120 | 550 | \$3,176.22 |
| LM-2455 | Without Clutch | 25.7 | 120 | 550 | \$2,559.88 |
| LM-2458 | Electric Clutch | 25.7 | 120 | 550 | \$3,412.08 |
| LM-2459 | Hydraulic Clutch | 25.7 | 120 | 550 | \$3,342.22 |
| LM-4450 | Manual Throwout | 34.2 | 120 | 450 | \$3,645.17 |
| LM-4455 | Without Clutch | 34.2 | 120 | 450 | \$3,108.32 |
| LM-4458 | Electric Clutch | 34.2 | 120 | 450 | \$3,887.46 |
| LM-4459 | Hydraulic Clutch | 34.2 | 120 | 450 | \$3,952.91 |
| LM-4950 | Manual Throwout | 68.4 | 120 | 450 | \$4,526.58 |
| LM-4955 | Without Clutch | 68.4 | 120 | 450 | \$4,160.83 |
| LM-4959 | Hydraulic Clutch | 68.4 | 120 | 450 | \$4,893.19 |

DRIVES & MISCELLANEOUS COMPONENTS

| Part# | Description | Price |
|------------|--------------------------------|------------|
| LA-1341-HA | Hub Sprocket Adapter-4 Bolt | \$297.40 |
| A-1341-HA | Hub Sprocket Adapter-6 Bolt | \$275.68 |
| A-5450 | Hub Clutch Assembly | \$1,144.37 |
| A-1342-B | 50 Tooth Roller Chain Sprocket | \$161.62 |
| A-1342-A | 60 Tooth Roller Chain Sprocket | \$202.88 |
| A-1502 | 80 Tooth Roller Chain Sprocket | \$254.90 |
| A-399 | Single Spool Idler w/ Bracket | \$159.70 |

REPAIR KITS

| | | |
|--------|-----------------|----------|
| 113717 | 2450 Series Kit | \$162.99 |
| 111953 | 4450 Series Kit | \$181.21 |
| 111947 | 4950 Series Kit | \$315.76 |

1lb. CHECK VALVES

| | | |
|------------|------------------------|---------|
| 115-284-01 | 1/4" Hose Check Valves | \$33.85 |
| 115-285-01 | 3/8" Hose Check Valves | \$33.85 |
| 115-286-01 | 1/2" Hose Check Valves | \$34.67 |

CDS Flow Divider



Liquid fertilizer users demand accurate rates. The patented CDS-John Blue "Exacto-Flow" Flow Divider when used in conjunction with our liquid metering piston pump is guaranteed to deliver. After extensive research, we know that the FD-1200 and FD-2000 accurately divide liquid products across a wide range of application rates. We have proven in the field that it is the most accurate distribution of any automatic flow divider system on the market today. The FD-1200 and FD-2000 provide unsurpassed accuracy with application rates as low as 5 GPA and as high as 80 GPA on 30 inch row spacing at 5MPH

CDS FLOW DIVIDERS

| Part# | Description | Outlets | Inlet Size | Outlet Size | Max Flow/Outlet | Price |
|--------|--|---------|------------|-------------|-----------------|------------|
| FD1200 | "Exacto-Flow" Stainless Steel Flow Divider | 12 | 3/4" FPT | 1/4" FPT | 2.25 GPM | \$1,028.36 |
| FD2000 | "Exacto-Flow" Stainless Steel Flow Divider | 20 | 1" FPT | 1/4" FPT | 2.25 GPM | \$1,961.85 |



DRV-3300 GROUND DRIVE PUMP

Complete Ground Drive that automatically adjusts for your terrain. Ground Drive with pump mount - spring loaded adjustment mechanism, less tire & u-bolts.

GROUND DRIVE PUMP

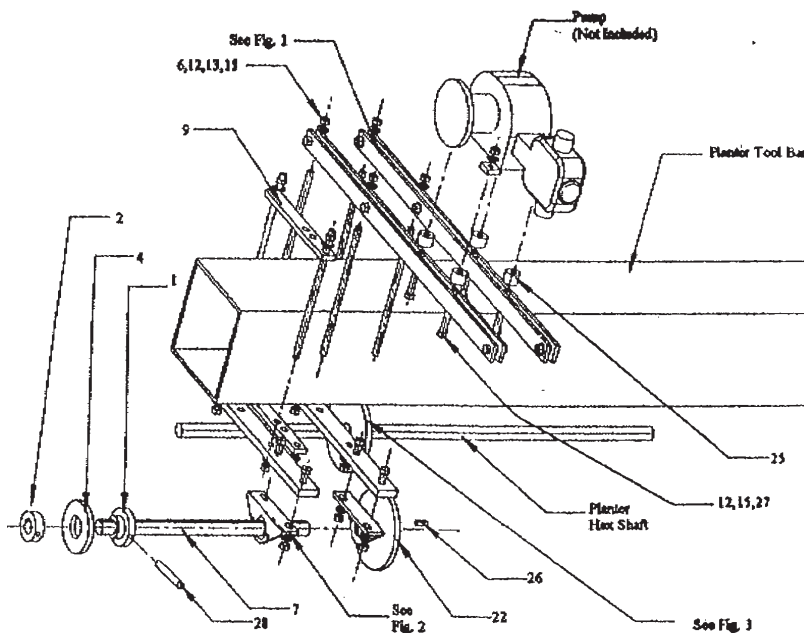
| Part# | Description | Price |
|----------|----------------------------|------------|
| DRV-3300 | Complete Ground Drive Pump | \$2,170.00 |

Universal Piston Pump Mount Package



UNIVERSAL PISTON PUMP MOUNTING & DRIVE PACKAGE

| Part# | Description | Price |
|--------|---|----------|
| 114916 | Mounting Package (Specify Rate & Row Spacing) | \$832.70 |



| Ref# | Part# | Qty | Description | Price |
|------|-----------|-----|-----------------------------------|----------|
| 1 | L-1414-1 | 1 | Shaft Adaptor (1" Bore) | \$62.18 |
| 2 | L-4414-1 | 1 | Sprocket Retainer | \$53.44 |
| 3 | L-1404 | 2 | Connector Link (for 20-40 Chain) | \$8.24 |
| 4 | L-1385 | 1 | Sprocket, 10T (Double Pitch) | \$20.54 |
| * | 114516-01 | 1 | Sprocket, 12T (for 1" Shaft) | \$63.79 |
| 5 | 114921-01 | 4 | Rail, Pump Mount | \$42.56 |
| 6 | 114923-01 | 6 | Threaded Rod | \$39.71 |
| 7 | 114922-01 | 1 | Counter Shaft | \$106.02 |
| 8 | 114925-01 | 1 | Chain (47 Links of 20-40 RC) | \$77.29 |
| 9 | 114926-01 | 2 | Clamp Plate | \$29.58 |
| 10 | 114920-01 | 2 | Clamp Plate | \$33.86 |
| 11 | A-177 | 6 | Spacer | NA |
| 12 | 93024 | 22 | 3/8" Lock Washer | \$.23 |
| 13 | 93011 | 10 | 3/8" Flat Washer | \$.21 |
| 14 | 90653 | 6 | 3/8" x 1 1/4" Bolt | \$.96 |
| 15 | 92024 | 26 | 3/8" Hex Nut | \$.23 |
| 16 | A-4332 | 2 | Bearing | \$121.16 |
| 17 | 90651 | 4 | 3/8" x 1" Bolt | \$.64 |
| 18 | 90578 | 4 | 5/16" x 1" Carriage Bolt | \$.87 |
| 19 | 92020 | 4 | 5/16" Hex Nut | \$.31 |
| 20 | 93023 | 4 | 5/16" Lock Washer | \$.94 |
| 21 | S-2943 | 1 | Connector Link (for Std 40 Chain) | \$ 3.14 |
| 22 | 114932-01 | 1 | Sprocket, 32T (1" Bore) | \$123.01 |
| 23 | 114936-91 | 1 | Sprocket Assembly, 32T (RC-40) | \$222.64 |
| 24 | 114934-01 | 1 | Chain (61 Links of Std 40 Chain) | NA |
| 25 | 114937-01 | 4 | Spacer (for Mounting Pump) | \$34.78 |
| 26 | L-1020 | 2 | Key (for use with Sprocket) | \$2.78 |
| 27 | 90595 | 4 | 3/8" x 3 1/4" Carriage Bolt | \$2.60 |
| 28 | A-2763 | 1 | Roll Pin | \$2.45 |

