




CENTRIFUGAL PUMPS

9000 SERIES GEAR DRIVEN CENTRIFUGAL PUMPS		Max. RPM	Max. GPM	Max. PSI	Price
Part#	Description				
9006C-O	Cast Iron, oil lubricated, 1 3/8" PTO hub w/ locking collar & mount clips, 1 1/2" NPT inlet / 1 1/4" NPT outlet	600	117	78	\$1,055.75
9008C-O	Cast Iron, oil lubricated, 1 3/8" 1000 RPM w/ locking collar & mount clips, 1 1/2" NPT inlet / 1 1/4" NPT outlet	1000	110	75	\$1,094.89
9016C-O	Cast Iron, oil lubricated, 1" solid shaft, 1 1/2" NPT inlet / 1 1/4" NPT outlet	600	117	78	\$1,041.33
9018C-O	Cast Iron, oil lubricated, 1" solid shaft, 1 1/2" NPT inlet / 1 1/4" NPT outlet	1000	110	75	\$1,081.50
9028C-O	Cast Iron, oil lubricated, 1 3/4" - 20 spline with locking collar 7 mount clips, 1 1/2" NPT inlet / 1 1/4" outlet	1000	110	75	\$1,269.99
3430-0334	Seal and O-Ring Repair Kit				\$44.47
3430-0591	Silicon Carbide Seal Kit				\$201.67

Available with Silicon Carbide Seals. Add suffix letter "B" to part number (ex: 9006C-O-B)
Gear Driven Pump also available in Polypropylene, sub "P" of "C" (ex. 9006P-O)




9006C-O

PARTS BREAKDOWN ON PAGE 175

List Price
Please Apply Discount



9600C TURBINE		Max. RPM	Max. GPM	Max. PSI	Price
Part#	Description				
9600C	High-capacity Turbine Pump made of cast iron w/ Valox impeller, Viton lip seals and stainless steel 15/16" shaft and 1/4" key way. 1 1/2" NPT inlet/outlet	1200	100	100	\$580.92
1320-0080	1 3/4" Forged Steel PTO Adapter				\$75.06
1320-0078	1 3/8" Forged Steel PTO Adapter				\$49.57
3430-0346	Torque Arm Kit for 9600C				\$34.84
3430-0347	Seal and O-Ring Repair Kit				\$33.74
0400-9600P	Valox Impeller				\$92.06




9600C

PARTS BREAKDOWN ON PAGE 178



9400 SERIES CAST IRON BELT-DRIVEN PUMPS							
Part#	MAX GPM	MAX PSI	MAX RPM	SHAFT	HOUSING	PORTS	PRICE
9403C-540	140	104	600	1 3/8" hollow 6-spline	Cast Iron	1 1/2" NPT inlet 1 1/4" NPT outlet	\$1,134.03
9403C-540Q	140	104	600	1 3/8" 6-spline quick coupler	Cast Iron	1 1/2" NPT inlet 1 1/4" NPT outlet	\$1,149.48
9403C-540S	140	104	600	1" solid	Cast Iron	1 1/2" NPT inlet 1 1/4" NPT outlet	\$1,149.48
9403C-1000	140	104	1000	1 3/8" hollow 21-spline	Cast Iron	1 1/2" NPT inlet 1 1/4" NPT outlet	\$1,149.48
9403C-1000L	140	104	1000	1 3/4" hollow 20-spline	Cast Iron	1 1/2" NPT inlet 1 1/4" NPT outlet	\$1,193.77
9403C-1000S	140	104	1000	1" solid	Cast Iron	1 1/2" NPT inlet 1 1/4" NPT outlet	\$1,149.48
3430-0332	Seal and O-Ring Repair Kit						\$49.29
3430-0476	Seal, O-Ring, Belt and Gasket Repair Kit for 540 RPM Drives						\$121.23
3430-0477	Seal, O-Ring, Belt and Gasket Repair Kit for 1000 RPM Drives						\$112.73
3430-0589	Silicon Carbide Seal Kit						\$193.74
3100-0006	Poly V-Belt (540 RPM)						\$73.65
3100-0005	Poly V-Belt (1000 RPM)						\$65.43



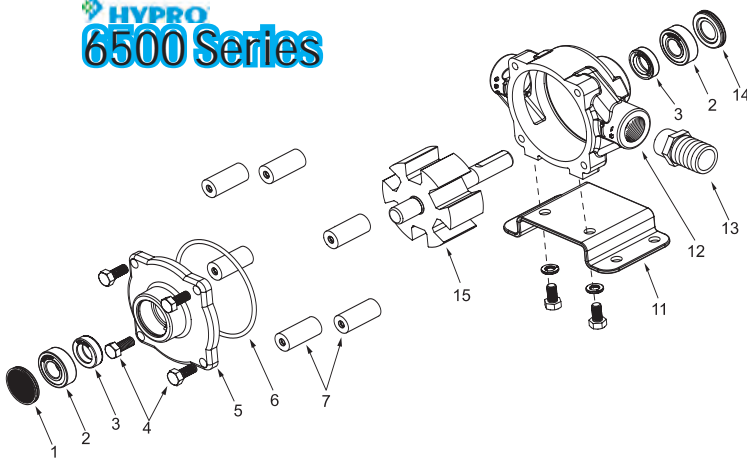
9403C

PARTS BREAKDOWN ON PAGE 176



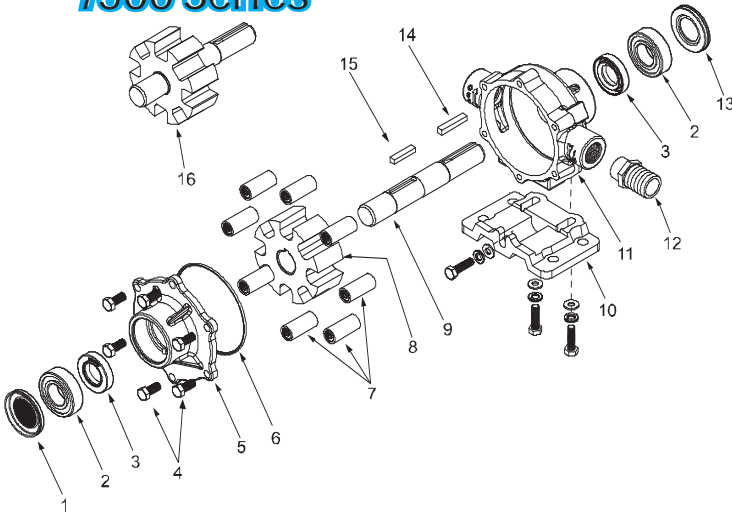
ROLLER PUMPS

HYPRO
6500 Series



List Price
Please Apply Discount

HYPRO
7500 Series



PUMP REPLACEMENT PARTS

Ref No.	Qty	Part#	Description	Price
1	1	2300-0021	Bearing Cover	\$1.25
2	2	2000-0010	Sealed Ball Bearing	\$9.12
3	2	2102-0001	Buna-N Seal (Optional)	\$22.16
3	2	2102-0001T	Teflon-Coated Buna-N Seal (Optional)	\$34.84
4	4	2210-0004	Bolts	\$.74
5	1	0200-6600C	Endplate (Cast Iron) with Seal	\$52.68
5	1	0200-6600N	Endplate (Ni-Resist) with Seal	\$149.56
5	1	0200-6600X	Endplate (SilverCast) with Seal	\$209.61
6	1	1720-0008	O-Ring Gasket for Endplate	\$1.30
7	6	1005-0004	Super Roller (Standard)	\$3.23
7	6	1002-0004	Polypropylene Roller (Optional)	\$2.78
7	6	1052-0004	Buna-N Roller (Optional)	\$49.57
7	6	1055-0004	Teflon Roller (Optional)	\$16.15
11	1	3420-0023	Base Kit - Includes: (1) Base, (2) Bolts and (2) Washers	\$31.44
12	1	0100-6600C	Body (Cast Iron) with Seal	\$88.94
12	1	0100-6600N	Body (Ni-Resist) with Seal	\$302.51
12	1	0100-6600X	Body (SilverCast) with Seal	\$418.08
13	1	2404-0052	1" Hose Barb	\$2.15
14	1	2300-0023	Shaft Bearing Cover	\$1.30
15	1	0300-6600C	Rotor Assembly (Cast Iron)	\$103.39
15	1	0300-6600N	Rotor Assembly (Ni-Resist)	\$277.59
15	1	0300-6600X	Rotor Assembly (SilverCast)	\$309.31
3430-0380		Repair Kit: (6) SuperRollers (Ref# 7), (1) O-Ring (Ref# 6) and (2) Viton Seals (Ref# 3)		\$38.52
3430-0175		Repair Kit: (6) Polypropylene Rollers (Ref# 7), (1) O-Ring (Ref# 6) and(2) Viton Seals (Ref# 3)		\$35.97

Ref No.	Qty	Part#	Description	Price
1	1	2300-0020	Bearing Cover	\$1.25
2	2	2008-0001	Sealed Ball Bearing	\$13.31
3	2	2112-0003	Viton Seal (Standard)	\$14.73
3	2	2112-0001	Buna-N Seal (Optional)	\$13.60
4	6	2210-0004	Bolts	\$.74
5	1	0204-7500C	Endplate (Cast Iron) with Seal	\$71.10
5	1	0204-7500N	Endplate (Ni-Resist) with Seal	\$188.08
5	1	0204-7500X	Endplate (SilverCast) with Seal	\$259.46
6	1	1720-0014	O-Ring Gasket for Endplate	\$1.98
7	8	1005-0004	Super Roller (Standard)	\$3.23
7	8	1002-0004	Polypropylene Roller (Optional)	\$2.78
7	8	1052-0004	Buna-N Roller (Optional)	\$49.57
7	8	1055-0004	Teflon Roller (Optional)	\$16.15
8	1	0404-7500S	Rotor (Standard N & XL)	NA
9	1	0510-7500	Shaft (416 Stainless Steel)	\$40.50
10	1	3420-0003	Base Kit - Includes: (1) Base, (3) Bolts and (3) washers	\$50.14
11	1	0104-7500C	Body (Cast Iron) with Seal	\$115.57
11	1	0104-7500N	Body (Ni-Resist) with Seal	\$371.62
11	1	0104-7500X	Body (SilverCast) with Seal	\$525.71
13	1	2300-0022	Shaft Bearing Cover	\$1.25
14	1	1610-0005	Key	\$1.42
15	1	1610-0059	Key (Stainless Steel)	\$4.14
16	1	0308-7560C	Rotor Assembly (Cast Iron)	\$121.23
3430-0380		Repair Kit: (6) SuperRollers (Ref# 7), (1) O-Ring (Ref# 6) and (2) Viton Seals (Ref# 3)		\$38.52
3430-0175		Repair Kit: (6) Polypropylene Rollers (Ref# 7), (1) O-Ring (Ref# 6) and(2) Viton Seals (Ref# 3)		\$35.97

Ref No.	Qty	Part#	Description	Price
1	1	0150-9600C	Body	\$338.77
2	1	0250-9600C	Housing	\$358.03
3	1	1201-0015	Impeller Insert	\$123.50
4	1	0500-9600	Shaft, Stainless Steel, 15/16" Diameter 1/4" Keyway	\$107.64
5	1	0400-9600P	Impeller, Corrosion Resistant Valox	\$92.06
6	1	1610-0045	Key- Woodruff	\$9.74
7	1	1710-0015	Gasket	\$5.16
8	3	1810-0008	Retainer Ring - External	\$1.30
9	1	1820-0025	Retainer Ring - Internal	\$3.29
10	2	2008-0001	Sealed Ball Bearing	\$13.31
11	2	2112-0003	Seal - Viton	\$14.73
12	1	2300-0020	Bearing Cover	\$1.25
13	6	2210-0026	Screw, Hex Head	\$.79
14	1	2406-0007	Pipe Plug	\$.79
15	1	6031-0299	Decal	NA

HYPRO
9600C Turbine
Will NOT Interchange With
Delavan Turbo 90

