




## CENTRIFUGAL PUMPS

9000 SERIES GEAR DRIVEN CENTRIFUGAL PUMPS		Max. RPM	Max. GPM	Max. PSI	Price
Part#	Description				
9006C-O	Cast Iron, oil lubricated, 1 3/8" PTO hub w/ locking collar & mount clips, 1 1/2" NPT inlet / 1 1/4" NPT outlet	600	117	78	\$1,055.75
9008C-O	Cast Iron, oil lubricated, 1 3/8" 1000 RPM w/ locking collar & mount clips, 1 1/2" NPT inlet / 1 1/4" NPT outlet	1000	110	75	\$1,094.89
9016C-O	Cast Iron, oil lubricated, 1" solid shaft, 1 1/2" NPT inlet / 1 1/4" NPT outlet	600	117	78	\$1,041.33
9018C-O	Cast Iron, oil lubricated, 1" solid shaft, 1 1/2" NPT inlet / 1 1/4" NPT outlet	1000	110	75	\$1,081.50
9028C-O	Cast Iron, oil lubricated, 1 3/4" - 20 spline with locking collar 7 mount clips, 1 1/2" NPT inlet / 1 1/4" outlet	1000	110	75	\$1,269.99
3430-0334	Seal and O-Ring Repair Kit				\$44.47
3430-0591	Silicon Carbide Seal Kit				\$201.67

Available with Silicon Carbide Seals. Add suffix letter "B" to part number (ex: 9006C-O-B)  
Gear Driven Pump also available in Polypropylene, sub "P" of "C" (ex. 9006P-O)




9006C-O

**PARTS BREAKDOWN ON PAGE 175**

**List Price**  
Please Apply Discount



9600C TURBINE		Max. RPM	Max. GPM	Max. PSI	Price
Part#	Description				
9600C	High-capacity Turbine Pump made of cast iron w/ Valox impeller, Viton lip seals and stainless steel 15/16" shaft and 1/4" key way. 1 1/2" NPT inlet/outlet	1200	100	100	\$580.92
1320-0080	1 3/4" Forged Steel PTO Adapter				\$75.06
1320-0078	1 3/8" Forged Steel PTO Adapter				\$49.57
3430-0346	Torque Arm Kit for 9600C				\$34.84
3430-0347	Seal and O-Ring Repair Kit				\$33.74
0400-9600P	Valox Impeller				\$92.06




9600C

**PARTS BREAKDOWN ON PAGE 178**



9400 SERIES CAST IRON BELT-DRIVEN PUMPS							
Part#	MAX GPM	MAX PSI	MAX RPM	SHAFT	HOUSING	PORTS	PRICE
9403C-540	140	104	600	1 3/8" hollow 6-spline	Cast Iron	1 1/2" NPT inlet 1 1/4" NPT outlet	\$1,134.03
9403C-540Q	140	104	600	1 3/8" 6-spline quick coupler	Cast Iron	1 1/2" NPT inlet 1 1/4" NPT outlet	\$1,149.48
9403C-540S	140	104	600	1" solid	Cast Iron	1 1/2" NPT inlet 1 1/4" NPT outlet	\$1,149.48
9403C-1000	140	104	1000	1 3/8" hollow 21-spline	Cast Iron	1 1/2" NPT inlet 1 1/4" NPT outlet	\$1,149.48
9403C-1000L	140	104	1000	1 3/4" hollow 20-spline	Cast Iron	1 1/2" NPT inlet 1 1/4" NPT outlet	\$1,193.77
9403C-1000S	140	104	1000	1" solid	Cast Iron	1 1/2" NPT inlet 1 1/4" NPT outlet	\$1,149.48
3430-0332	Seal and O-Ring Repair Kit						\$49.29
3430-0476	Seal, O-Ring, Belt and Gasket Repair Kit for 540 RPM Drives						\$121.23
3430-0477	Seal, O-Ring, Belt and Gasket Repair Kit for 1000 RPM Drives						\$112.73
3430-0589	Silicon Carbide Seal Kit						\$193.74
3100-0006	Poly V-Belt (540 RPM)						\$73.65
3100-0005	Poly V-Belt (1000 RPM)						\$65.43



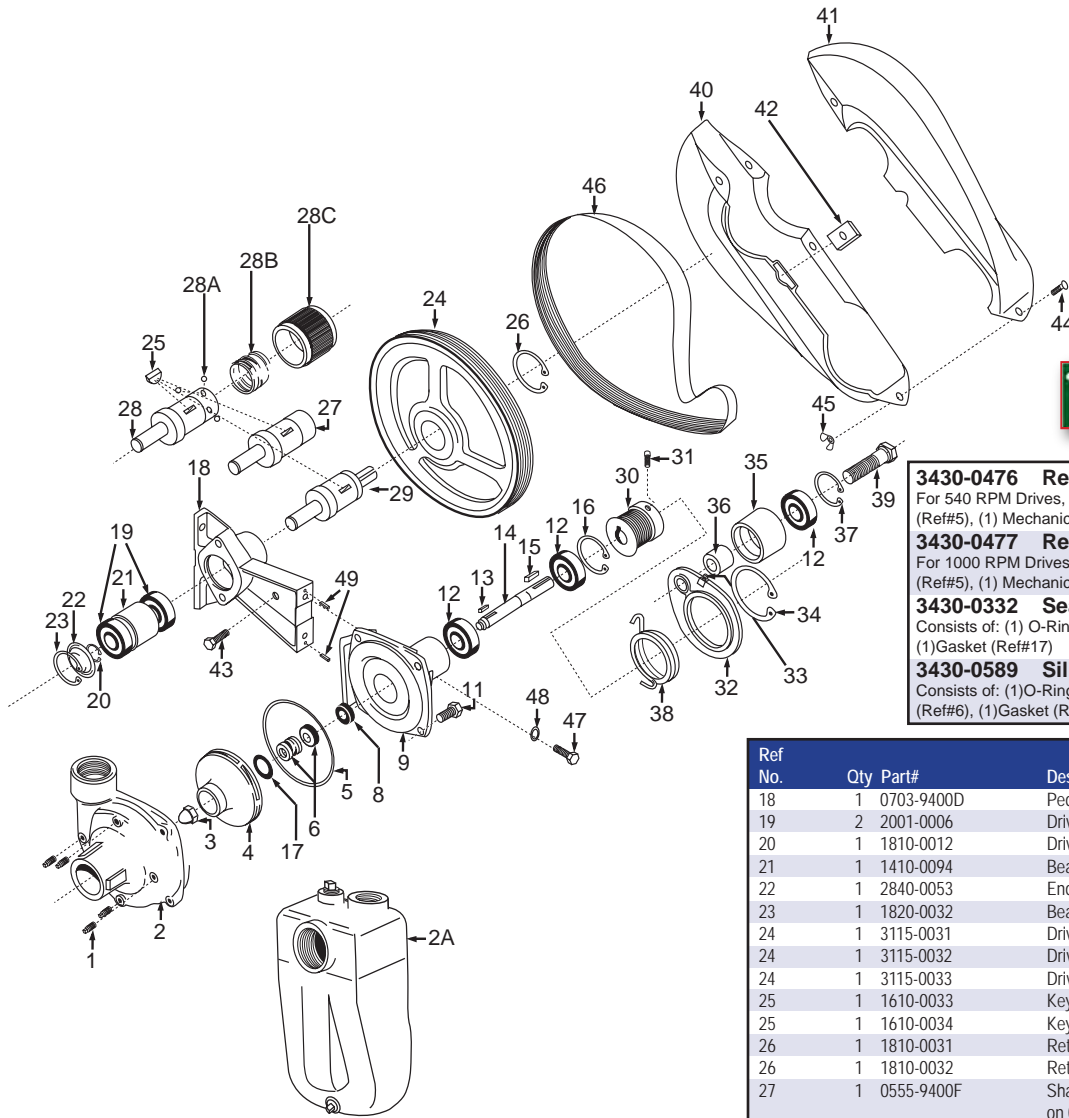
9403C

**PARTS BREAKDOWN ON PAGE 176**

# PUMP REPLACEMENT PARTS



**BELT DRIVEN PUMPS**  
9402C, 9403C, 9403S and 9403C-SP



- 3430-0476 Repair Kit \$121.23**  
For 540 RPM Drives, consists of: (1) Poly V-Belt (Ref#46), (1) O-Ring (Ref#5), (1) Mechanical Seal, Viton (Ref#6), (1) Gasket (Ref#17)
- 3430-0477 Repair Kit \$112.73**  
For 1000 RPM Drives, consists of: (1) Poly V-Belt (Ref#46), (1) O-Ring (Ref#5), (1) Mechanical Seal, Viton (Ref#6), (1) Gasket (Ref#17)
- 3430-0332 Seal Repair Kit \$49.29**  
Consists of: (1) O-Ring (Ref#5), (1) Mechanical Seal, Viton (Ref#6), (1) Gasket (Ref#17)
- 3430-0589 Silicon Carbide Repair Kit \$193.74**  
Consists of: (1) O-Ring (Ref#5), (1) Mechanical Seal, Silicon Carbide (Ref#6), (1) Gasket (Ref#17)

Ref No.	Qty	Part#	Description	Price
1	4	2406-0007	Drain Plug	\$ .79
2	1	0150-9000C	Pump Casing (9403C)	\$199.41
2	1	0150-9000S1	Pump Casing (9403S)	\$580.10
2	1	0150-9200C	Pump Casing (9402C)	\$222.07
2A	1	3430-0480SP	Pump Casing (9403C-SP) (The above casings include a stainless steel wear ring.)	\$297.98
3	1	2253-0002	Impeller Nut	\$4.82
3	1	2253-0006	Impeller Nut (9403S)	\$24.36
4	1	0401-9100P	Impeller-Nylon (standard)	\$41.92
4	1	0402-9100P	Impeller-Polypropylene (9403S standard)	\$61.60
5	1	1720-0083	O-Ring	\$2.89
6	1	2120-0008	Mechanical Seal (Optional Buna-N)	\$25.21
6	1	2120-0009	Mechanical Seal (Standard Viton)	\$43.62
6	1	3430-0589	Mechanical Seal (Opt. Silicon Carbide)	\$193.74
8	1	1410-0056	Slinger Ring	\$1.02
9	1	0750-9200C	Mounting Flange	\$578.96
9	1	0750-9200S	Mounting Flange (9403S)	\$603.89
10	1	6031-0252	Nameplate (Specify Model Number)	NA
11	4	2210-0020	Bolt	\$.74
11	4	2210-0125	Bolt (9403S)	\$1.47
12	3	2000-0010	Ball Bearing	\$9.12
13	1	1610-0015	Key	\$1.47
14	1	0505-9200	Pump Shaft	\$141.63
15	1	1610-0004	Key	\$1.30
16	1	1820-0013	Bearing Retainer	\$.96
17	1	1700-0100	Gasket	\$4.14

Ref No.	Qty	Part#	Description	Price
18	1	0703-9400D	Pedestal Bracket	\$278.72
19	2	2001-0006	Driver Shaft Bearings	\$18.69
20	1	1810-0012	Driver Shaft Bearing Retainer Ring	\$1.53
21	1	1410-0094	Bearing Spacer	\$28.04
22	1	2840-0053	End Cap (label)	\$9.40
23	1	1820-0032	Bearing Bore Retaining ring	\$3.23
24	1	3115-0031	Driver Pulley (540 RPM)	\$575.56
24	1	3115-0032	Driver Pulley (1000 RPM)	\$427.14
24	1	3115-0033	Driver Pulley (1000 RPM, 1 3/4" Shaft)	\$713.79
25	1	1610-0033	Key (Driver Pulley)	\$6.80
25	1	1610-0034	Key (Driver Pulley, 1 3/4" Shaft)	\$1.81
26	1	1810-0031	Retaining Ring (Driver Pulley)	\$3.46
26	1	1810-0032	Retaining Ring (Dr. Pulley-1 3/4" Shaft)	\$7.99
27	1	0555-9400F	Shaft - 540 RPM (3430-0207 kit used on 0555-9400F & 0556-9400F shafts)	\$191.48
27	1	0556-9400F	Shaft - 1000 RPM (3430-0207 kit used on 0555-9400F & 0556-9400F shafts)	\$438.47
27	1	0557-9400F	Shaft - 1 3/4" 1000 RPM (3430-0190 kit used on 0557-9400F shaft)	\$595.34
28	1	0555-9400F1	Shaft-540 Quick Coupler	\$345.57
28A	3	3250-0004	Locking Ball	\$1.02
28B	1	1900-0115	Collar Spring	\$16.43
28C	1	1400-0021	Collar	\$53.25
29	1	0503-9400	Shaft (1" Solid)	\$155.22
30	1	3115-0034	Driven Pulley (5/8" Diameter Bore)	\$104.24
31	2	2230-0003	Set Screw for Driven Pulley	\$.74
32	1	0706-9400C	Idler Bracket (Cast Iron Pumps)	\$310.44
33	1	2403-0003	Grease Zerk Fitting	\$5.50
34	1	1810-0036	Retaining Ring (Idler Bracket, Cast Iron)	\$4.48
35	1	3115-0036	Idler Pulley	\$47.02
36	1	1410-0095	Spacer (Idler Pulley)	\$5.78
37	1	1820-0013	Retaining Ring (Idler Pulley)	\$.96
38	1	1900-0156	Torsion Spring (Idler for Cast Iron)	\$14.45
39	1	2210-0111	Idler Bolt / Shaft	\$3.00
40	1	2840-0075	Belt Shield	\$24.36
41	1	2840-0076	Belt Shield	\$24.36
42	1	1520-0062	Bracket for Belt Shield	\$14.16
43	1	2210-0021	Attachment Bolt for Shield	\$.74
44	4	2210-0017	Assembly Bolts for Shield	\$.85
45	4	2252-0002	Assembly Nuts for Shield	\$.79
46	1	3100-0006	Poly V-Belt (540 RPM)	\$73.65
46	1	3100-0005	Poly V-Belt (1000 RPM)	\$65.43
47	2	2210-0055	Bolts for Pump to Bracket	\$.57
48	2	2260-0006	Lock Washers for Bracket Bolts	\$.57
49	2	1600-0070	Roll Pin	\$.74