



PISTON PUMP

HYPRO PUMPS

Part#	Description	Max. RPM	Max. GPM	Max. PSI	Price
5315C-HX	Cast iron pumps with torque arm, 5/8" I.D. hollow shaft,				\$423.33
5315C-HRX	1/2" NPT ports, 140° F maximum temp. Cup material:	1800	1.5	500	\$423.33
5315C-CHX	HX (leather), HRX (Buna-N), CHX (Teflon)				\$452.17
5320C-HX	Cast iron pumps with torque arm, 5/8" I.D. hollow shaft,				\$423.33
5320C-HRX	1/2" NPT ports, 140° F maximum temp. Cup material:	1800	2.2	500	\$423.33
5320C-CHX	HX (leather), HRX (Buna-N), CHX (Teflon)				\$425.17
5325C-HX	Cast iron pumps with torque arm, 5/8" I.D. hollow shaft,				\$423.33
5325C-HRX	1/2" NPT ports, 140° F maximum temp. Cup material:	1800	2.5	500	\$423.33
5325C-CHX	HX (leather), HRX (Buna-N), CHX (Teflon)				\$452.17
5330C-HX	Cast iron pumps with torque arm, 5/8" I.D. hollow shaft,				\$423.33
5330C-HRX	1/2" NPT ports, 140° F maximum temp. Cup material:	1800	3.0	500	\$423.33
5330C-CHX	HX (leather), HRX (Buna-N), CHX (Teflon)				\$452.17
5315C-X	Cast iron pumps with base, 5/8" O.D. solid shaft,				\$423.33
5315C-RX	1/2" NPT ports, 140° F maximum temp. Cup material:	1800	1.5	500	\$423.33
5315C-CX	X (leather), RX (Buna-N), CX (Teflon)				\$452.17
5320C-X	Cast iron pumps with base, 5/8" O.D. solid shaft,				\$423.33
5320C-RX	1/2" NPT ports, 140° F maximum temp. Cup material:	1800	2.2	500	\$423.33
5320C-CX	X (leather), RX (Buna-N), CX (Teflon)				\$452.17
5325C-X	Cast iron pumps with base, 5/8" O.D. solid shaft,				\$423.33
5325C-RX	1/2" NPT ports, 140° F maximum temp. Cup material:	1800	2.5	500	\$423.33
5325C-CX	X (leather), RX (Buna-N), CX (Teflon)				\$452.17
5330C-X	Cast iron pumps with base, 5/8" O.D. solid shaft,				\$423.33
5330C-RX	1/2" NPT ports, 140° F maximum temp. Cup material:	1800	3.0	500	\$423.33
5330C-CX	X (leather), RX (Buna-N), CX (Teflon)				\$452.17
3430-0007	Leather Cut Kit - (2) Piston Cap Screws, (2) Washers, (2) O-Rings, (2) Leather Cups,				<b>\$22.09</b>
	(2) O-Rings, and (2) Seal Rings				
3430-0009	Rubber Cup Kit - Same as Leather Cup Kit except w/ Rubber Cups				<b>\$17.84</b>
3430-0008	Leather Cup and Guide Kit - Consists of: Leather Cup Kit plus two Piston Guides				<b>\$32.86</b>
3430-0010	Rubber Cup and Guide Kit - Consists of: Rubber Cup Kit plus two Piston Guides				<b>\$28.61</b>
3430-0046	Teflon Cup and Guide Kit - Consists of: Teflon Cup Stack Kit plus to Piston Guides				<b>\$53.53</b>



PARTS BREAKDOWN ON PAGE 189



Part#	Description	Max. RPM	Max. GPM	Max. PSI	Price
5321C	Cast Iron pump w/ torque arm & Buna-N seals, 5/8" O.D.	1800	2.2	1000	<b>\$454.23</b>
5322C	solid shaft, 1/2" NPT ports, 180° F maximum temp. Plunger material: Stainless Steel (5321)/Ceramic (5322)	1800	2.2	1000	<b>\$454.23</b>
5321C-H	Cast Iron pump w/ torque arm & Buna-N seals, 5/8" I.D.	1800	2.2	1000	<b>\$454.23</b>
5322C-H	hollow shaft, 1/2" NPT ports, 180° F maximum temp. Plunger material: Stainless Steel (5321)/Ceramic (5322)	1800	2.2	1000	<b>\$454.23</b>
5324C	Cast Iron pump w/ torque arm & Buna-N seals, 5/8" O.D.	1800	2.9	800	<b>\$454.23</b>
	solid shaft, 1/2" NPT ports, 140° F maximum temp. Plunger material: Stainless Steel				
5324C-H	Cast Iron pump w/ torque arm & Buna-N seals, 5/8" I.D.	1800	2.9	800	<b>\$454.23</b>
	hollow shaft, 1/2" NPT ports, 140° F maximum temp. Plunger material: Stainless Steel				
3430-0144	Plunger stack kit, Consists of: 2 guides, 4 O-Rings, 2 Seal Assemblies, 2 Capscrews/washers				<b>\$43.62</b>
3430-0145	Plunger parts kit, Consists of: 1 Plunger Stack Kit and 2 Plungers				<b>\$121.23</b>
53702	Cast iron pump w/ torque arm & Buna-N seals and ceramic	3450	2.2	1000	<b>\$449.08</b>
53703	plungers. 5/8" I.D. hollow shaft, 1/2" NPT ports, 180° F maximum temp.	3100	2.3	1000	<b>\$449.08</b>

*Requires a Special Order Gas Engine w/ 5/8" Shaft*



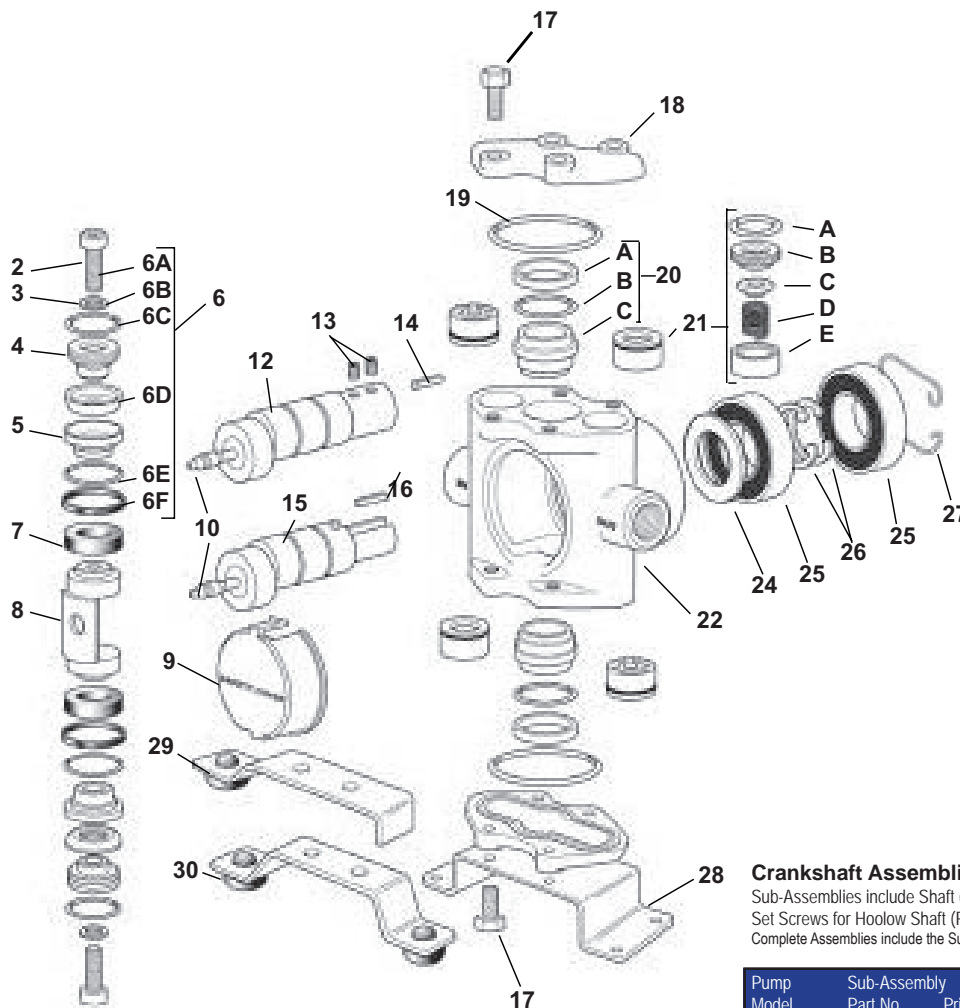
**List Price**  
Please Apply Discount

# PUMP REPLACEMENT PARTS



PUMP REPLACEMENT PARTS

## PISTON PUMPS 5300 Series



### Piston Stack Parts Kit

#### Leather Cup Kit

3430-0007

\$22.09

Consists of two each of the following parts: No. 2220-0012 Piston Cap Screw (Ref 6A), No. 2270-0011 Washer (Ref. 6B), No. 1720-0029 O-Ring (Ref. 6C), No. 2150-0002 Leather Cup (Ref. 6D), No. 1720-0039 O-Ring (Ref. 6E), and No. 1440-0008 Seal Ring (Ref. 6F).

#### Rubber Cup Kit

3430-0009

\$17.84

Same as above kit except with No. 2150-0005 Rubber Cups.

### Piston Stack and Guide Parts Kits

#### Leather Cup & Guide Kit

3430-0008

\$32.86

Consists of Leather Cup Kit No. 3430-0007 plus two No. 1440-0004 Piston Guides (Ref. 7)

#### Rubber Cup & Guide Kit

3430-0010

\$28.61

Consists of Rubber Cup Kit No. 3430-0009 plus two No. 1440-0004 Piston Guides.

#### Teflon Cup and Guide Kit

3430-0046

\$53.53

Consists of Teflon Cup Stack Kit plus 2 Piston Guides.

### Crankshaft Assemblies

Sub-Assemblies include Shaft (Ref. 12 or 15) with Cam Bearing, Grease Fitting Assembly (Ref. 10), Set Screws for Hollow Shaft (Ref. 13) and Spline Key (Ref. 14 or 16). Complete Assemblies include the Sub-Assembly plus parts identified by Reference Numbers 24-26

Pump Model	Sub-Assembly Part No.	Price	Complete Assembly Part No.	Price
with 5/8" (I.D.) Hollow Shaft (Ref. 12)				
5315C-H	5501-5315	\$117.83	5500-5315	\$171.08
5320C-H	5501-5320	\$109.62	5500-5320	\$171.08
5325C-H	5501-5325	\$135.96	5500-5325	\$171.08
5330C-H	5501-5330	\$133.69	5500-5330	\$171.08
with 5/8" Solid Shaft (Ref. 15)				
5315C	5001-5315	\$158.62	5000-5315	\$196.01
5320C	5001-5320	\$225.47	5000-5320	\$262.86
5325C	5001-5325	\$77.61	5000-5325	\$114.43
5330C	5001-5330	\$156.35	5000-5330	\$192.61



Ref No.	Qty	Part#	Description	Price
2	2	2220-0012	Piston Cap Screw	\$ .96
3	2	2270-0011	Washer	\$ .85
4	2	1830-0017	Piston Cup Spreader	\$3.57
5	2	1410-0030	Cup Backing Plate	\$4.36
6	1		Piston Stack Parts Kit (See Above)	See Above
7	2	1440-0004	Piston Guide	\$5.50
8	1	0502-5300	Connecting Rod	\$58.07
9	1	0608-5300	Safety Cover	\$2.04
10	1	2405-0006	Grease Fitting Assembly	\$9.80
12	1		Crankshaft Assemblies - Hollow Shaft Models, (See Above)	See Above
13	2	2230-0017	Set Screw for Hollow Shaft	\$1.30
14	1	1610-0011	Spline Key for Hollow Shaft	\$1.25
15	1		Crankshaft Assemblies-Solid Shaft Models, (See Above)	See Above
16	1	1610-0007	Spline Key for Solid Shaft	\$ .96
17	8	2210-0062	Cylinder Head Bolt	\$ .85
18	2	0204-5300C	Cylinder Head (Cast Iron)	\$30.59
19	2	1720-0038	O-Ring for Cylinder Head	\$ .96

Ref No.	Qty	Part#	Description	Price
20	1	3430-0209	Ni-Resist Cylinder Sleeve Assembly Consists of two each of No. 1830-0033 Retainer (Ref. A), No. 1720-0079 O-Ring (Ref. V), and No. 3550-0018 Sleeve (Ref. C)	\$85.82
21	1	3430-0197	Set of four No. 3400-0073 Unitized Valve Assemblies: Consists of four each: O-ring (Ref. A), Valve Seat (Ref. B), Valve Poppet (Ref. C), Valve Spring (Ref. D), Valve Spring Retainer (Ref. E)	\$44.75
22	1	0108-5300C	Body (Cast Iron)	\$107.64
24	1	2130-0007	Bearing Shield	\$1.25
25	2	2008-0001	Main Bearing (Ball Bearing)	\$13.88
26	2	1810-0013	Bearing Retainer Ring (shaft)	\$ .79
27	1	1820-0025	Bearing Retainer Ring (housing)	\$3.40
28	1	1510-0056	Mounting Base	\$10.48
29	1	2820-0040	Torque Arm - for Electric Motor Mounting	\$14.45